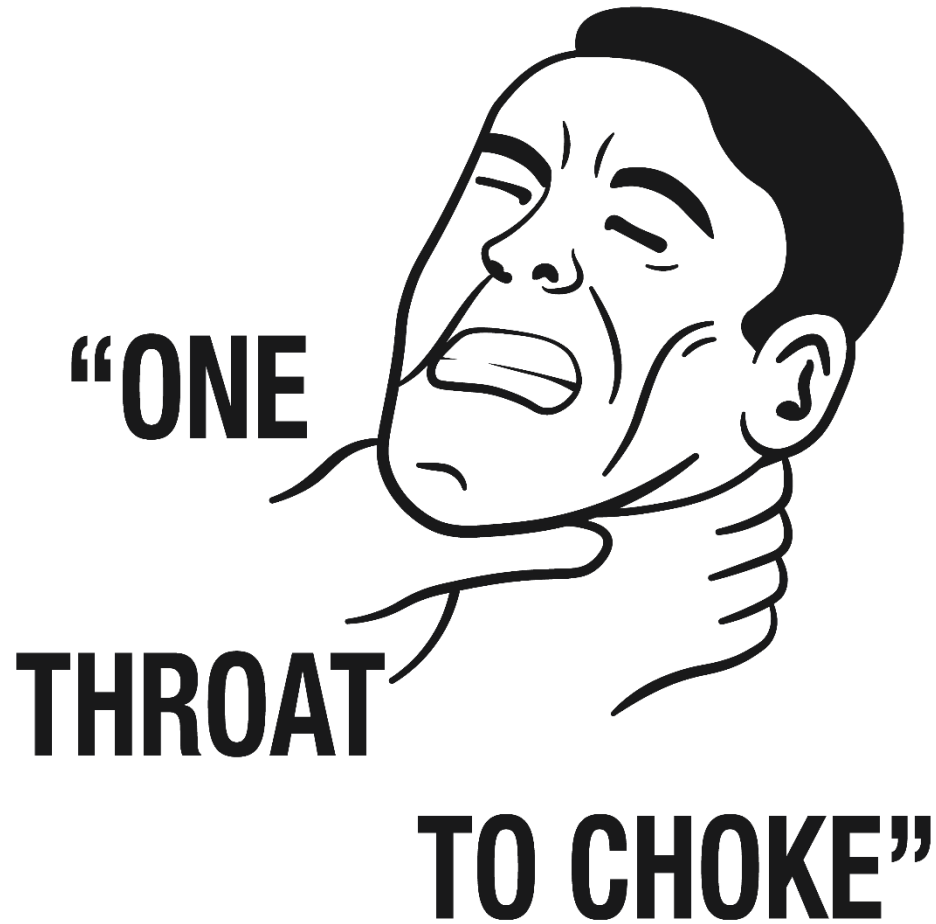




Hygienic Flooring Systems

About Our Company



Problem Floors



Common Flooring Issues

- Thermal shock from washdowns
- Improper drainage design
- Delamination (poor prep)
- Chemical exposure damage
- Impact from equipment traffic
- Joint failures at transitions



**B
E
F
O
R
E

A
N
D

A
F
T
E
R**



**B
E
F
O
R
E**



**A
N
D**



**A
F
T
E
R**

Types of Surface Preparation

This is the most critical process!



Scarification



Shot
Blasting



Grinding



Critical Design Details

Cove Base

- Eliminates 90° floor-to-wall angle
- Prevents moisture/bacteria harborage
- 2-4 inch cant or radius cove

Curbing

- Protects walls from impacts
- Contains liquids
- Integral with floor system

Equipment Grouting

- Seal equipment legs to floor
- Eliminate gaps and voids

KEY: No 90-degree angles



Material Selection by Environment

HEAVY DUTY Wet Processing

- Urethane cement 3/8"
- Thermal shock resistant
- Kill floors, rendering

MEDIUM DUTY Moderate Use

- Urethane cement 1/4"
- Self-leveling options
- Standard processing

LIGHT DUTY Dry Areas

- Coatings, polished concrete
- Warehouses, packaging

Product Comparison

Methyl
Methacrylates
(MMA)

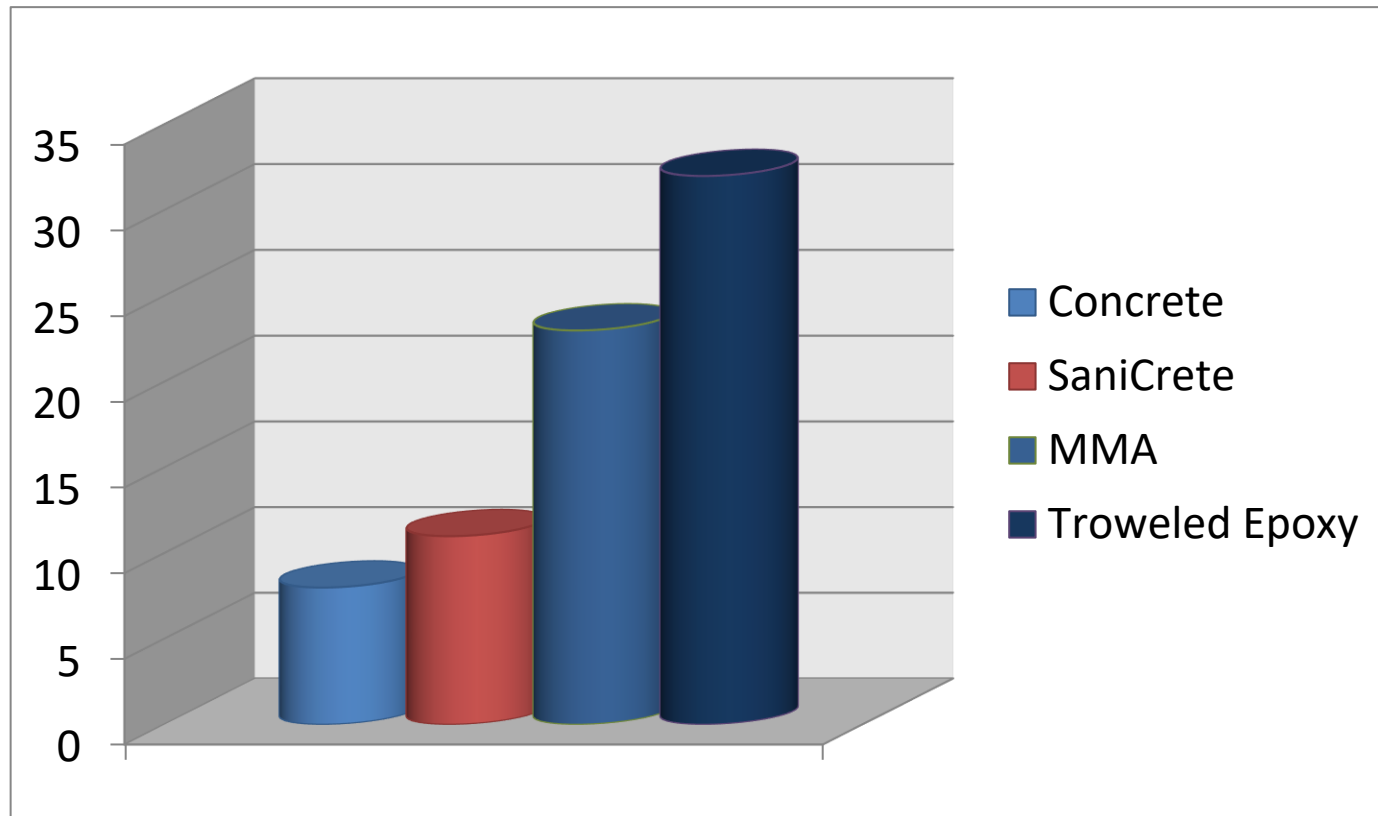
Epoxy

Cementitious
Polyurethane

Recommended



Thermal Shock Comparison



Flooring Solutions Framework

GOOD **Quick Repairs**

DIY Kits

4-hour cure to foot traffic

Maintenance staff can apply

USDA/FDA compliant

BETTER **Professional Install**

Urethane cement 3/8"

Weekend shutdown installs

Professional installation

BEST **Maximum Durability**

SaniCrete STX with Helix™
Fiber-reinforced urethane

Sloping

Drains

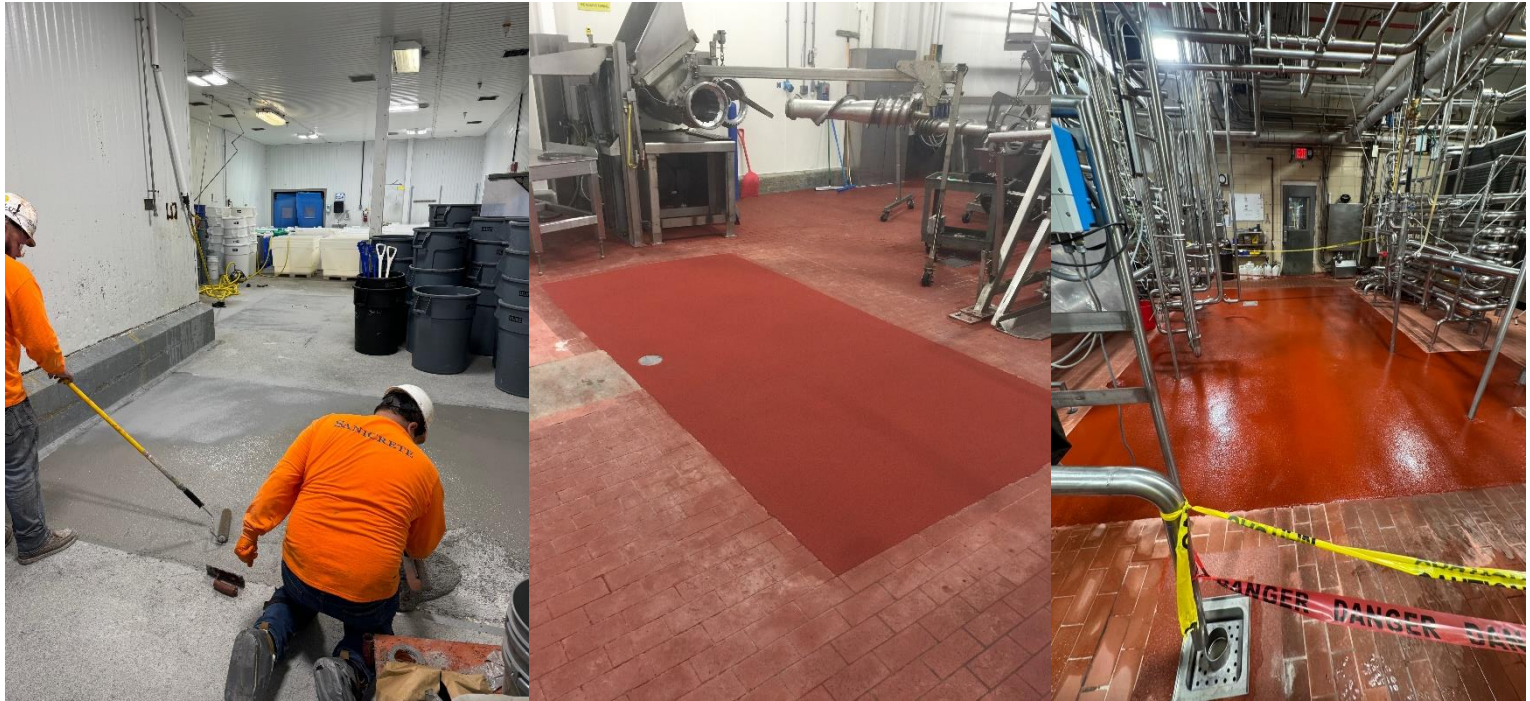
Curbing

Cove

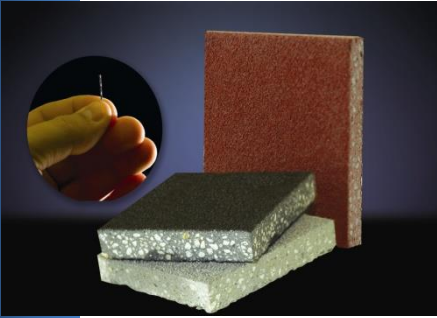
Good: SaniPatch Product



Better: Professional Install



Best: SaniCrete STX-Revolutionary Flooring



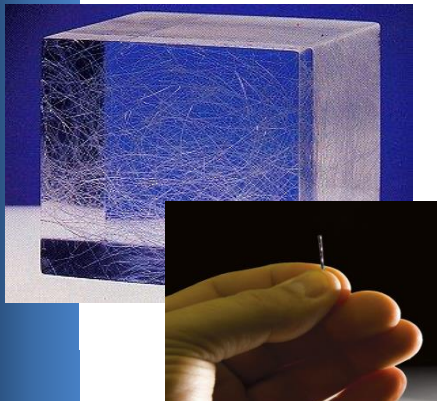
- Designed for earthquake-resistant structures
- Tested for more than 10 years
- Unsurpassed crack resistance and strength
- Thermal shock resistance -40 to 275 degrees

Durability



- Applied in 3/8" depth with a trowel
- Available in non-slip textures
- Can be used on vertical surfaces, cove bases, curbs, trench drains and walls

Application



- Stainless steel fiber additive
- Permanently locks the flooring matrix together
- Toothpick-size twisted stainless steel fiber
- Engineered by the University of Michigan

Helix

Best Continued: Proper Drainage Design

Slope Requirements:

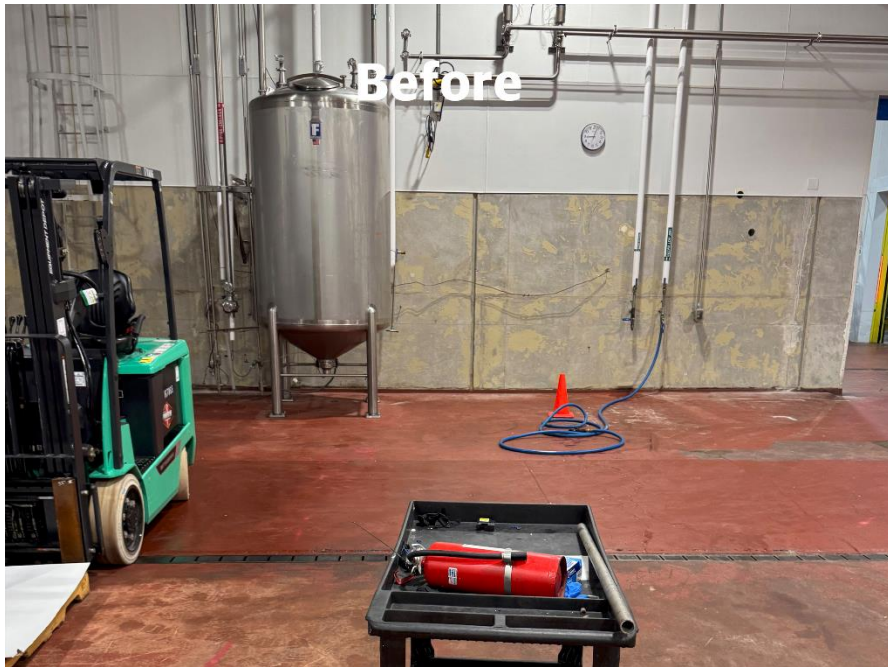
- Minimum 1/8" per foot (some plants use 1/4" per foot)
- Verify with laser levels
- Coordinate with drain locations

Floor-to-Drain Transitions:

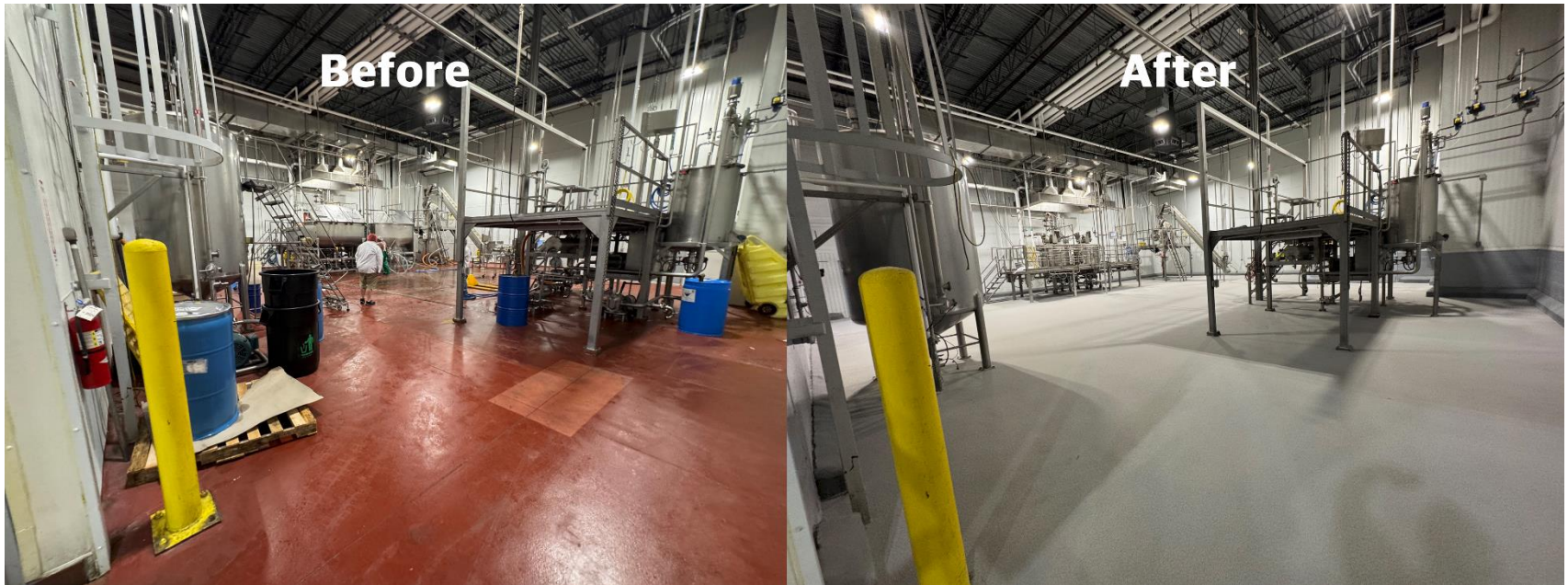
- Seamless integration critical
- No gaps for pathogen harborage
- Proper detailing around drains prevents undercutting

Alliance approach: Floors and drains installed together

Case Study



Case Study



Key Takeaways

1. Surface preparation determines success or failure
2. Match material to environment
3. Details matter
 - Cove base, not 90° angles
 - Grout equipment legs
 - Proper drainage slope
4. Floors and drains work together as one hygienic system

Questions?